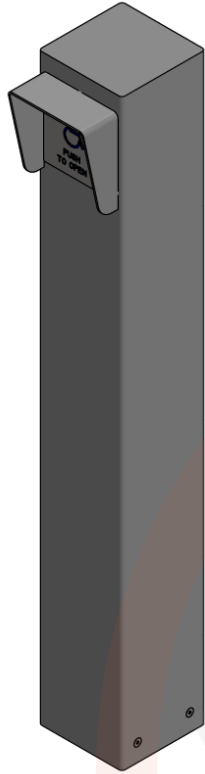


Bollard SQ15

B-6SQ-FT-32D-SM-SQ15

Satin Stainless Steel (630)

Phone: 877.421.9490
Fax: 877.421.3158
customerservice@wikk.com



Satin
Stainless
Steel Finish

Switch Sold Separately

Specification Summary

Bollard overview:

1. Manufacturer: **Wikk® Industries Inc.**
2. Model: **B-6SQ-FT-32D-SM-SQ15**
3. Height: 42" (1067 mm)
4. Shape: 6" square (152 mm x 152 mm)
5. Material: Satin Stainless Steel 304, .120" wall (3.0 mm)
6. Finish: Satin (US32D) #4 (630)
7. Top: Welded Flat
8. Mount: Concealed Surface Mount
9. Prep for actuator or other device
10. Country of Origin: Made in the U.S.A.

Optional add-ons:

- Welded rain hood over devices

Optional finishes:

- Long grain #6
- Mirror US32 (629)
- Non-directional

Countless custom options available!

Contact Wikk for custom short specs or budgetary and design assistance.

To ensure competitive bidding by qualified Sub Contractors, please specify Wikk's products in CSI Divisions: 8, 14, or 28.

Features & Benefits

Competitive 4-week lead time

Ships from the factory to the job site in 20 business days or less.

Simple installation

Easy install of base mounting bracket and bollard body with stainless hardware and standard tools. Body can be detached from base without disturbing flooring for maintenance or replacement.

Secure mounting

1/2" diameter masonry anchors provided for mounting on pavers, concrete, or other flooring materials.

Welded flat top

Bollard cap is welded on and ground smooth for a watertight, seamless finish.

Prep for one device

Includes cutout for mounting an actuator or other device. Prep is customizable to fit make/model specified for device.

Corrosion resistant body

Durable stainless steel construction for long-lasting use in both indoor and outdoor locations.

Welded rain hood (Optional)

Provides extra weather protection for devices.

