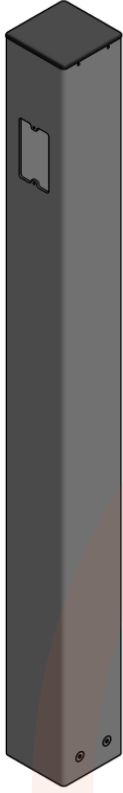


# Bollard SQ27

## B-4SQ-RT-32D-SM-SQ27

Satin Stainless Steel (630)

Phone: 877.421.9490  
Fax: 877.421.3158  
customerservice@wikk.com



Satin  
Stainless  
Steel Finish

### Specification Summary

#### Bollard overview:

1. Manufacturer: Wikk® Industries Inc.
2. Model: B-4SQ-RT-32D-SM-SQ27
3. Height: 42" (1067 mm)
4. Shape: 4" square (102 mm x 102 mm)
5. Material: Satin Stainless Steel 304, .120" wall (3.0 mm)
6. Finish: Satin (US32D) #4 (630)
7. Top: Removable Black Marine Board Cap
8. Mount: Concealed Surface Mount
9. Prep at 36" AFF (914 mm)
10. Country of Origin: Made in the U.S.A.

#### Optional add-ons:

- Transmitter & receiver pair for wireless applications (available in 433 or 868 MHz)

#### Optional finishes:

- Long grain #6
- Mirror US32 (629)
- Non-directional

#### Countless custom options available!

Contact Wikk for custom short specs or budgetary and design assistance.

**To ensure competitive bidding by qualified Sub Contractors, please specify Wikk's products in CSI Divisions: 8, 14, or 28.**

### Features & Benefits

#### Competitive 4-week lead time

Ships from the factory to the job site in 20 business days or less.

#### Simple installation

Easy install of base mounting bracket and bollard body with stainless hardware and standard tools. Body can be detached from base without disturbing flooring for maintenance or replacement.

#### Secure mounting

1/2" diameter masonry anchors provided for mounting on pavers, concrete, or other flooring materials.

#### Weather-resistant cap secured with stainless steel set screws

Easy removal of leak-free mortised black marine board cap to access internal wiring. Cap material is resistant to fading or cracking in all environments.

#### Prep for one device

Includes cutout for mounting an actuator or other device. Prep is customizable to fit make/model specified for device.

#### Corrosion resistant body

Durable stainless steel construction for long-lasting use in both indoor and outdoor locations.

#### Wireless operation (Optional)

Transmitter & battery secured directly under the removable cap for optimal transmission signal and convenient maintenance.

